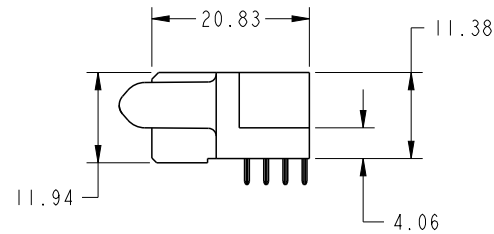
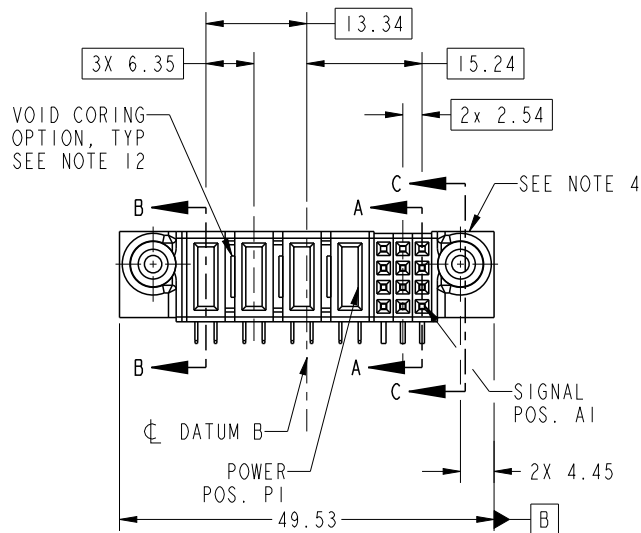


PRODUCT NO.	ROWS	POWER					SIGNAL			
		E2	P4	P3	P2	P1	3	2	1	E1
51772-025-- NOTE 3	D C B A		PC	PC	PA	PA	H G F E	H G F E	H G F E	

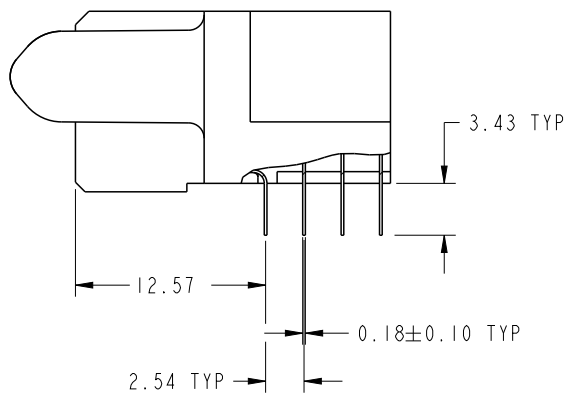


CODE	DIM "M" MATING LENGTH	CONTACT TYPE
PC	[2.34]	POWER
H	[N/A]	SIGNAL
G	[N/A]	SIGNAL
F	[N/A]	SIGNAL
E	[N/A]	SIGNAL
PA	[1.07]	POWER

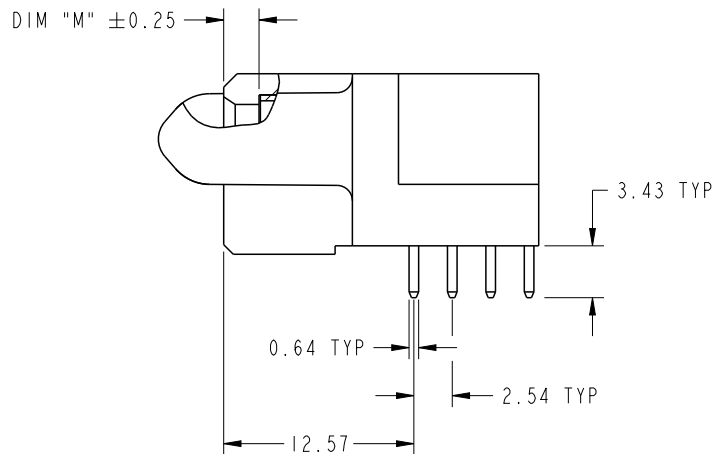
spec ref	SEE NOTES	dr	Anson Liu	2011/04/27	projection	MM	size	A4	scale	1:1										
tolerance std	TOLERANCES UNLESS OTHERWISE SPECIFIED	eng	Guang, Shi	2011/08/05			ecn no	-	rel level	Released										
SEE NOTES		chr	-	-																
surface	<table border="1"> <tr><td>linear</td><td>0.X</td><td>±0.50</td></tr> <tr><td></td><td>0.XX</td><td>±0.25</td></tr> <tr><td></td><td>0.XXX</td><td>±0.10</td></tr> <tr><td>angular</td><td>0°</td><td>±2°</td></tr> </table>	linear	0.X	±0.50		0.XX	±0.25		0.XXX	±0.10	angular	0°	±2°	appr	Pei-Ming Zheng	2011/08/05	product family	PwrBlade	rev	A
linear		0.X	±0.50																	
		0.XX	±0.25																	
	0.XXX	±0.10																		
angular	0°	±2°																		
				title	12S + 4P R/A STB RECEPTACLE		dwg no	51772-025												
		www.fci.com	cat. no.	Product - Customer Drw			sheet 1 of 4													

PRODUCT NUMBER

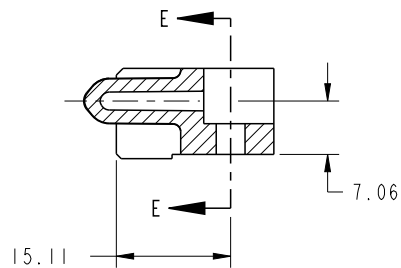
51772-025--



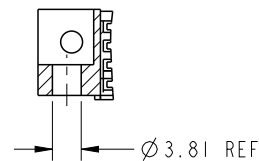
BROKEN-OUT SECTION A-A
SCALE 2:1



BROKEN-OUT SECTION B-B
SCALE 2:1



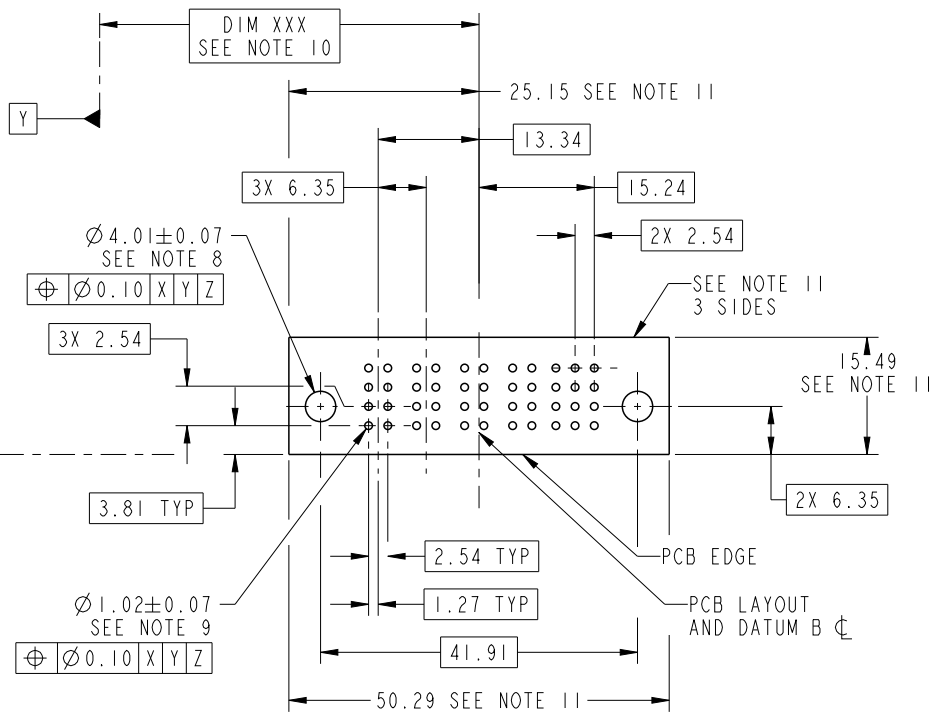
SECTION C-C



PARTIAL SECTION E-E

dr	Anson Liu	2011/04/27	projection 	MM 	size	A4	scale	1:1	
eng	Guang, Shi	2011/08/05			ecn no	-			
chr	-	-			rel level	Released			
appr	Pei-Ming Zheng	2011/08/05	product family	PwrBlade					
		title	12S + 4P R/A STB RECEPTACLE		dwg no	51772-025		rev	A
www.fci.com		cat. no.	Product - Customer Drw			sheet 2 of 4			

PRODUCT NUMBER
51772-025_



RECOMMENDED PCB LAYOUT

dr	Anson Liu	2011/04/27	projection 	MM 	size	A4	scale	1:1
eng	Guang, Shi	2011/08/05			ecn no	-		
chr	-	-			rel level	Released		
appr	Pei-Ming Zheng	2011/08/05	product family	PwrBlade	rel level	Released		
	title	12S + 4P R/A STB RECEPTACLE		dwg no	51772-025		rev	A
www.fci.com	cat. no.	Product - Customer Drw			sheet 3 of 4			

PRODUCT NUMBER

51772-025_

NOTES:

1. DIMENSIONS AND TOLERANCES ARE IN ACCORDANCE WITH ASME Y14.5M, 1994 UNLESS OTHERWISE SPECIFIED.

CONNECTOR NOTES:

- 2. HOUSING MATERIAL: UL 94 V-0 GLASS FILLED HIGH-TEMP THERMOPLASTIC
POWER CONTACT MATERIAL: COPPER ALLOY
SIGNAL PIN MATERIAL: COPPER ALLOY
 - 3. SEE ITEM 5 & 6 IN PRINT 10064183 FOR PLATING SPEC OF 51772-025 AND 51772-025LF RESPECTIVELY.
 - 4. MANUFACTURER'S NAME, DATE CODE AND OPTIONAL P/N TO APPEAR ON THIS SURFACE. THE P/N CAN BE OMITTED IF THERE IS NOT ENOUGH SPACE ON THIS SURFACE.
 - 5. PRODUCT SPECIFICATION GS-12-149.
APPLICATION SPECIFICATION BUS-20-067.
 - 6. PACKAGED IN TRAYS.
- PCB NOTES:
- 7. ALL HOLE DIAMETERS ARE FINISHED HOLE SIZE.
 - 8. MOUNTING HOLES, WHERE APPLICABLE, ARE UNPLATED.
 - 9. $\varnothing 1.151 \pm 0.025$ DRILLED HOLES PLATED WITH
0.008 MIN SnPb OR Sn OVER 0.03
TO 0.08 Cu PLATING TO ACHIEVE
 $\varnothing 1.02 \pm .07$ HOLE.
 - 10. "DIM XXX" TO BE DETERMINED BY THE CUSTOMER.
 - 11. CONNECTOR KEEP-OUT ZONE.
 - 12. THE VOID CORING IN BETWEEN POWER MODULES, SIGNAL MODULES AND END MODULES ARE OPTIONAL AND THE SHAPE MAY BE DIFFERENT FOR OPTIMIZE THE MOLDING PROCESS. THE VOID CORING WILL NOT EFFECT TO PRODUCT FUNCTION.

dr	Anson Liu	2011/04/27	projection 	MM 	size	A4	scale	1:1	
eng	Guang, Shi	2011/08/05			ecn no	-			
chr	-	-							
appr	Pei-Ming Zheng	2011/08/05	product family	PwrBlade	rel level	Released			
	title	12S + 4P R/A STB RECEPTACLE			dwg no	51772-025		rev	A
www.fci.com	cat. no.	Product - Customer Drw			sheet 4 of 4				



Copyright FCI.